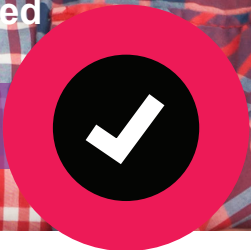




WE'VE GOT
ALL THE GEAR
YOU WANT.
A REALLY
GREAT RANGE
OF BEST-VALUE
BUYS... WITH
GREAT QUALITY
AND LOCAL
NZ SUPPORT.

Preferred
Choice

TRUSTED & REPUTABLE BRANDS



INSIDE:

Drilling

Cutting

Grinding/Sanding

Woodworking

Lathes

Pressure Washers

Accessories

Outdoor/Garden

Puma™ Air Center

Compressors

Air Tools

Valu-Air

and more...

Choose based on performance for price:

Every effort has been made to ensure that all models, prices, images & specifications are correct at the time of printing. However, details and specifications may change, so please check with your local distributor. Some product may not be stocked at all stores. Prices may change without notification.

Good Value.
Great Performance.
After-sales Support.

SEE INSIDE FOR
OUR GREAT RANGE...



TOOLINE®

CHOOSE BASED ON PERFORMANCE FOR PRICE:



Puma Double Diaphragm Pump

Model: SP-1580

Specifications:

Pressure ratio: 1:1

Air pressure: 1-5kg/cm²

Delivery 5L: 0.4 kg/cm²

Delivery 7.5L: 1 kg/cm²

Delivery 10.5L: 2 kg/cm²

Weight: 10.5kg



When you choose a powertool, that's just the start. You want to make sure that you've got a good deal, but also that you'll get the performance that was promised, the workability of good design and an assurance that someone will actually stand behind the sale and the quality of the product.

That's why more and more people are trusting Tooline. Shouldn't you?



"You have our assurance of our commitment to source the best tools for you, offering the best value we can and standing behind our products with after-sales support, based right here in New Zealand. You can rely on our Tooline name to stand for quality, affordability and performance."

Martin Toon,
Managing Director
Tooline

It's easy to find the products
that are right for you...



PREFERRED
CHOICE



AFTER SALES
SUPPORT



GREAT FOR
THE HOME



POPULAR
OPTION



MORE INFO
AVAILABLE



PROFESSIONAL
GRADE



BEST VALUE
BUY



JUST ADDED

All details correct at time of publication. Please refer to product for further details. Design and colour detailing may occasionally differ to those shown here.

The Tooline product
range includes...

- Drilling Equipment
- Cutting Gear
- Grinding/Sanding
- Woodworking
- Lathes
- Pressure Washers
- Accessories
- Outdoor/Garden equipment
- Compressors
- Air Tools
- Generators

...and more



Great
performance
at great
prices!

Geared Head Drill Press

Model:	Z5030A
Motor (W):	1100
Max drilling capacity:	30mm
Spindle taper:	MT4
Table dimensions:	540 x 470mm
Weight:	320kg
Speeds (6):	75, 170, 280, 540, 960, 1600

Yes

We proudly source some of our product from China

And yes, you can rely on its quality and high performance. We've been dealing with Chinese manufacturers for a great many years now and we understand how they work, who to choose and how to ensure you get the best quality at a fair price.

We travel to China on a frequent basis to check quality standards, to oversee design features and to maintain our solid working relationships. That all pays off in being able to deliver you the right tools at a very competitive price.

For more information on any product go to tooline.co.nz

Drilling

Drill Stand

Model:

DMSA

Bench mounted stand for hand-held drills.

Specifications:

Capacity:

38 - 43mm

Stroke:

50mm

Weight:

7kg

\$139.00

inc GST



208mm Bench Drill Press

Model:

DP209B

Small and lightweight for the workshop.

Specifications:

Swing:

208mm

Speeds:

5, 500 - 2,500rpm

Chuck:

13mm geared, MT2 - B16

Stroke:

45mm

Motor (W):

250

Weight:

12kg

\$269.00

inc GST



252mm Bench Drill Press

Model:

DP130B

Compact and sturdy, this is suitable for a wide variety of uses. Most appropriate for the small workshop where space is limited.

Specifications:

Swing:

260mm

Speeds:

5, 620 - 2,620rpm

Chuck:

16mm geared, MT2-B16

Stroke:

60mm

Motor (W):

450

Weight:

26kg

\$419.00

inc GST



310mm Bench Drill Press

Model:

DP155B

Compact and sturdy, this is suitable for a wide variety of uses. Most appropriate for the small workshop where space is limited.

Specifications:

Swing:

310mm

Speeds:

12, 300 - 2,550rpm

Chuck:

16mm geared, MT2

Spindle travel:

60mm

Motor (W):

375

Weight:

34kg

\$569.00

inc GST



340mm Bench Drill Press

Model:

DP163B

Bench mount makes this ideal for the woodworking shop where space is limited. Inbuilt light.

Specifications:

Swing:

325mm

Speeds:

16, 180 - 2,770rpm

Chuck:

16mm geared, MT2

Spindle travel:

80mm

Motor (W):

550

Weight:

38kg

\$669.00

inc GST



360mm Bench Drill Press

Model:

DP180B

With a large coolant collection tray, this is ideal for general engineering workshops.

Specifications:

Swing:

360mm

Speeds:

16, 180 - 2,770rpm

Chuck:

16mm geared, MT2

Spindle travel:

85mm

Motor (W):

750

Weight:

55kg

- Inbuilt light

- No volt release switch for safety

- Cogged drive belts

- Max steel drilling capacity 20mm

\$849.00

inc GST



Drilling

325mm Floor Drill Press

Model: DP163F

Floor mounted drill press suitable for woodworkers. Aluminium motor housing and pulleys make this unit lightweight and efficient.

Specifications:

Swing:	325mm
Speeds:	16, 180 - 2,770rpm
Chuck:	MT2-B16
Spindle travel:	80mm
Motor (W):	550
Weight:	55kg

- Chuck guard
- Chuck and chuck key
- Cogged drive belt
- Safety switch

\$789.00

inc GST



352mm Floor Drill Press

Model: DP176F

Sturdy and robust with a coolant tray for use in engineering workshops.

Specifications:

Swing:	352mm
Speeds:	12, 280 - 2,830rpm
Chuck:	16mm geared, MT3
Spindle travel:	85mm
Motor (W):	750
Weight:	71kg

- Aluminium belt pulleys
- Inbuilt light
- No volt release switch for safety
- Cogged drive belts
- Max steel drilling capacity 28mm

\$979.00

inc GST



Geared Head Drill Press

Model:	Z5030
Motor (W):	1100
Max drilling capacity:	30mm
Spindle taper:	MT4
Table dimensions:	540 x 470mm
Weight:	320kg
Speeds (6):	75, 170, 280, 540, 960, 1600

510mm Floor Drill Press

Model: DP255F

Ideal for large engineering workshops. Substantial work table, suitable for coolant collection.

Specifications:

Swing:	510mm
Speeds:	12, 150 - 2,450rpm
Chuck:	16mm geared, MT4
Spindle travel:	120mm
Motor (W):	1,100
Weight:	125kg

- No volt release switch for safety
- Inbuilt light
- Cogged drive belts for increased power transmission
- Increased heat dissipation
- Max steel drilling capacity: 32mm

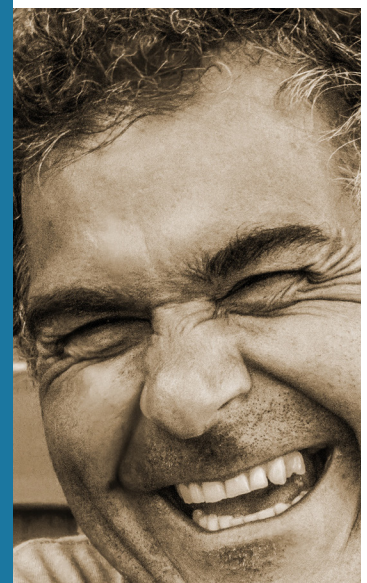
\$1,769.00

inc GST



Quality at a great price, with reliable performance and local after-sales support - that's our Tooline promise.

For more information, see our products instore or go online...



Cutting

Band Saw – 2 Wheel

Model:	BS240
--------	-------

With a power efficient motor, 80mm throat height and a tiltable cast iron table, slicing veneers, trimming planks or cutting shapes has never been so easy.

Specifications:	
Throat width:	230mm
Blade speed (m/s):	11.5
Sawblade length:	1,575mm
Weight:	17kg
Motor (W):	350

\$479.00

inc GST



Band Saw – 2 Wheel

Model:	BS305
--------	-------

Sturdy, two wheel band saw with 305mm throat for a wide variety of wood cutting. Stand included.

Specifications:	
Throat width:	305mm
Cutting Height:	155m
Blade speeds (m/min):	370, 800
Sawblade length:	2,240mm
Max workpiece (mm):	600 x 600 x 155
Weight:	60kg
Motor (W):	750

\$1,199.00

inc GST



Band Saw – 2 Wheel

Model:	BS356
--------	-------

Large cast iron table with tilting 0°/45°. Quick blade change. Stand included.

Specifications:	
Table size:	548 x 400mm
Throat width:	340mm
Blade speeds (m/min):	400, 840
Blade length:	2,560mm
Max work piece height:	230mm
Weight:	88kg
Motor (W):	1,100

\$1,629.00

inc GST



Band Saw – Meat Cutting With Mincer

Model:	BS250M
--------	--------

Meat cutting bandsaw with mincer and stand.

Specifications:	
Table size (stainless steel):	465 x 600mm
Max cutting height:	240mm
Max cutting depth:	250mm
Blade:	Stainless steel 2,085 x 16 x 4mm
Weight:	52kg
Motor (W):	550

\$898.00

inc GST



Spare Blades Available

Band Saw – Metal Cutting

Model:	MBS116
--------	--------

Sturdy metal cutting bandsaw. Ideal for the small workshop. Stand included. Excellent blade guides allow for accurate work.

Specifications:	
Cutting size (round):	100mm
Cutting size (rectangle):	110 x 150mm
Blade speeds (m/min):	20/29/50
Weight:	61kg
Motor (W):	370

\$1,329.00

inc GST



Band Saw – Metal Cutting

Model:	MBS180
--------	--------

180mm metal cutting bandsaw with coolant supply and hydraulic damper. Stand included.

Specifications:	
Capacity 0° (round):	178mm
Capacity 0° (square):	178 x 300mm
Capacity 45° (round):	110mm
Capacity 45° (square):	110 x 180mm
Blade speeds (m/min):	4, 34/41/59/98
Blade size:	2,362 x 0.8 x 19mm
Weight:	145kg
Motor (W):	750

\$2,819.00

inc GST



Band Saw - Metal Cutting

Model:	MBS205
--------	--------

205mm swivel head.

Specifications:	
Blade Speeds:	31, 50, 60m/min
Capacity round:	205mm
Rectangular:	205 x 215mm
Blade:	2,360 x 20 x 0.9mm
Weight:	190kg
Motor (W):	1,100

\$3,800.00

inc GST



Abrasive Cut-off Saw

Model:	ACS356
--------	--------

355mm abrasive saw for metal cutting. Fast release clamp.

Specifications:	
Blade size:	355 x 25.4mm
Max Capacity (round):	90mm
Max Capacity (rectangle):	100 x 120mm
Weight:	17kg
Motor (W):	2,200

\$449.00

inc GST



Cut-off Saw – Single Phase

Model:	CS16
--------	------

Heavy duty, 405mm cut off saw suitable for engineering workshops.

Specifications:	
Disc Ø:	406 x 3 x 25mm
Cutting capacity (round):	40mm
Box section:	100 x 100 x 10mm
Flat:	100 x 6mm
Weight:	90kg
Motor (W):	2,200, single phase

\$1,349.00

inc GST



Cut-off Saw – 3 Phase

Model:	CS17 3 Phase
--------	--------------

Heavy duty 405mm cut off saw suitable for engineering workshops.

Specifications:	
Disc Ø:	406mm x 25mm
Cutting capacity (round):	40mm
Box section:	100 x 100 x 10mm
Flat:	100 x 6mm
Weight:	90kg
Motor (W):	2,200, 3 phase

\$1,349.00

inc GST



Cutting

Table Saw

Model: TS250

Table saw for the domestic workshop. Stand included.

Specifications:

Blade: 254 x 15.9 x 2.8, 40T

Max cutting capacity 90°: 80mm

Max cutting capacity 45°: 55mm

Weight: 21.5kg

Motor (W): 1,500

\$569.00

inc GST



Table Saw

Model: TS255

Sturdy 255mm cast iron top table saw with large ripping capacity. Stand included.

Specifications:

Blade: 254 x 30mm (40 T)

Max cutting capacity: 80mm

Max rip width (right): 762mm

Max rip width (left): 330mm

Weight: 135kg

Motor (W): 1,500

\$1,869.00

inc GST



Site Saw

Model: TS316C

Sturdy crosscut and ripping saw for use on building sites or at the workshop. Comes with stand and rear extension. Dust extraction.

Specifications:

Blade: 315 x 30mm x 3.0 (40T)

Tilt: 0-45°

Max cutting depth 90°: 85mm

Max cutting depth 45°: 46mm

Table size: 800 x 550mm

Weight: 54kg Motor (W): 2,000

\$789.00

inc GST



Panel Sizing Saw

Model: PS255

Complete with sliding carriage, and side extension.

Specifications:

Blade: 254 x 30mm

Main table: 560 x 800mm

Cross extension table: 305 x 800mm

Max timber width: 630mm

Max timber length: 1,400mm

Max depth of cut 90°: 75mm

Max depth of cut 45°: 60mm

Motor (W): 2,200

Weight: 205kg

\$3,949.00

inc GST



GREAT BUYING



Crosscut Saw

Model: CS211

Lightweight mitre saw for the domestic workshop.

Specifications:

Blade: 210 x 15.9 x (24T)

Tilt Range: 0-45°

Weight: 5.4kg

Motor (W): 1,400

\$229.00

inc GST



Dual Bevel Sliding Crosscut Saw

Model: CSS254

254mm slide saw with laser line, indexed mitre stops, workpiece clamp and sliding fence.

Specifications:

Blade: 254 x 15.9 x 2.8mm (40T)

Maximum cutting capacity: 305 x 90mm

Weight: 21kg

Motor (W): 1,800

\$719.00

inc GST



Dual Bevel Sliding Mitre Saw

Model: CSS306

Professional grade for reliable service. LED and laser light for precise cutting..

Specifications:

Blade: 305 x 25.4 x 2.4mm 48T

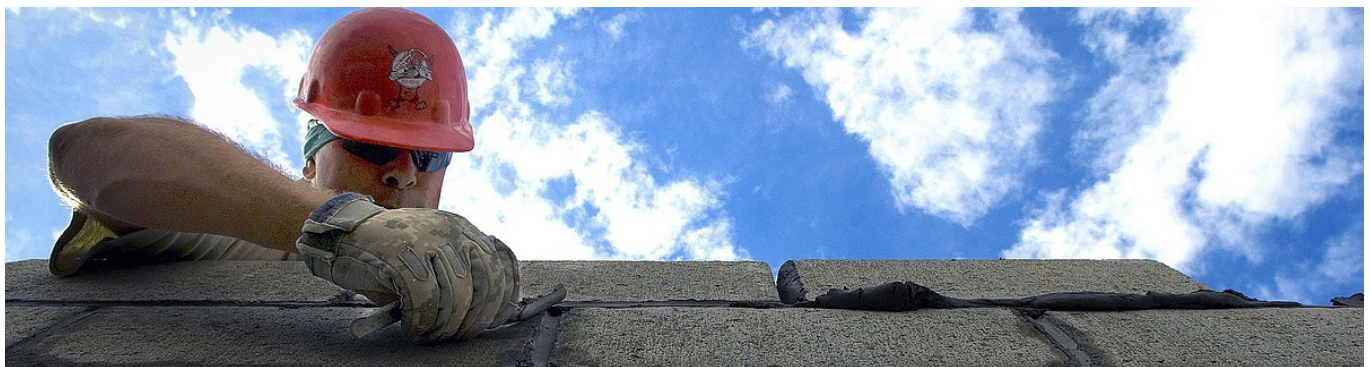
Max Cutting Capacity: 355 x 100mm

Weight: 27.5kg

Motor (W): 1,800

\$899.00

inc GST



Cutting / Grinding

18, 15 TPI
Blades
Available



Scroll Saw

Model:

SS402

Variable speed with 405mm throat. Engraving tool and light included.

Specifications:

Speeds:

550 – 1,650rpm Variable

Max cutting thickness:

50mm

Stroke:

20mm

Throat:

405mm

Weight:

16.9kg

Table tilt:

45°

Motor (W):

125

\$379.00

inc GST



Scroll Saw

Model:

SS457

Heavy duty, variable speed with 457mm throat. Engraving tool and router table included.

Specifications:

Speeds:

400 - 1,600rpm Variable

Flexible shaft speeds:

1,200 - 4,500rpm

Blade Stroke:

19mm

Throat:

457mm

Weight:

21.5kg

Motor (W):

240

\$689.00

inc GST



Metal Linisher

Model:

MS76

Heavy duty metal linisher for the engineering workshop. Stand included

Specifications:

Belt size:

75 x 200mm, 80 grit

Belt speed:

30 m/sec

Working cap. on bed:

650 x 75mm

Working cap. on wheel:

200 x 75mm

Total rest height range:

100 - 1,050mm

Weight:

72kg

Motor (W):

2,200

\$1,863.00

inc GST

Wet Sharpener

Model:

S4500

Utility Sharpener with Coolant tray.

Specifications:

Wheel:

118 x 38mm, 120 grit

Weight:

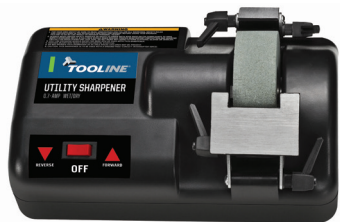
4.2kg

Motor (W):

70

\$229.00

inc GST



Drill Bit Sharpener

Model:

DBS13

Drill bit sharpener. Quick change diamond sharpening wheel.

Specifications:

Drill bit sharpening range:

3 - 13mm

Point angle fixed:

118°

Weight:

2.5kg

Motor (W):

80

\$163.00

inc GST



Drill Bit Sharpener

Model:

BSG13

11 Collects, 3-13mm

Specifications:

Point angle:

100°-BS

Weight:

10kg

Motor (W):

140

\$1,194.00

inc GST



Wet Sharpener

Model:

S216

8" Low Speed Wet Sharpener. Gear transmission for more torque 220 Grit grinding wheel and leather stropping wheel. Supplied with angle guide and knife holder.

Accessories available

Long Knife Jig
Short knife Jig
Scissor Jig
Axe Jig
Dressing Device
Leather Honing Wheel

Specifications:

Motor (W):

180

Motor speed:

95rpm

Dry wheel size:

200 x 30 x 12mm

Wet wheel size:

200 x 40 x 12mm

Wet wheel grit:

220

Weight:

10.5kg

\$349.00

inc GST



Extensive range
of jigs available

Wet Sharpener

Model:

S250

10" Low Speed Wet Sharpener. Gear transmission for more torque 220 Grit grinding wheel and leather stropping wheel. Supplied with angle guide and knife holder.

Accessories available

Long Knife Jig
Short knife Jig
Scissor Jig
Axe Jig
Dressing Device
Leather Honing Wheel

Specifications:

Motor (W):

180

Motor speed:

95rpm

Dry wheel size:

200 x 30 x 12mm

Wet wheel size:

250 x 50 x 12mm

Wet wheel grit:

220

Weight:

15.3kg

\$449.00

inc GST



RIGHT TOOL
RIGHT CHOICE
RIGHT PRICE

Cutting / Grinding

150mm Bench Grinder

Model:	BG151
Designed for New Zealand workshops, this rugged grinder offers lots of power with smooth running features for long life.	

Specifications:	
Stone size:	150 x 20 x 12.75mm
Spindle:	12mm
Weight:	10.5kg
Motor (W):	250

\$179.00 inc GST



200mm Bench Grinder

Model:	BG202
Serious DIY grinder with eye shields to help protect the user.	

Specifications:	
Stone size:	200 x 20 x 16mm
No load speed:	2,950/min
Weight:	12kg
Motor (W):	300

\$209.00 inc GST



200mm Bench Grinder

Model:	BG201
This grinder is robust and efficient, a compliment to the New Zealand workshop. Copper wires.	

Specifications:	
Stone size:	200 x 25 x 16mm
Spindle:	16mm
Weight:	13kg
Motor (W):	300

\$239.00 inc GST



Heavy Duty Bench Grinder

Model:	BG203
Robust bench grinder suitable for use with accessories. Auto on light. Coolant tray.	

Specifications:	
Stone size:	200 x 25 x 16mm
Spindle:	16mm
Weight:	18kg
Motor (W):	550

\$282.00 inc GST



Bench Grinder

Model:	BG204
--------	-------

Specifications:	
Belt width:	50mm
Disc diameter:	178mm
Weight:	22.5kg
Motor (W):	700

\$399.00 inc GST



Bench Grinder/Sander

Model:	BGS200
200mm Bench Grinder with wood sanding attachment. Auto on light.	

Specifications:	
Stone size:	200 x 20 x 16mm
Spindle:	16mm
Belt size:	50 x 710mm
Weight:	16.5kg
Motor (W):	350

\$359.00 inc GST

80, 120 Grit Belts Available



Heavy Duty Bench Grinder

Model:	BG250H
This heavy duty bench grinder is built tough. Comes with spindle for polishing mop and suitable for attaching accessories.	

Specifications:	
Stone size:	250 x 25 x 20mm
Spindle:	20mm
Weight:	32.5kg
Motor (W):	1,100

\$559.00 inc GST



Heavy Duty Polisher

Model:	BM250
250mm Bench Grinder with double mop attachments.	

Specifications:	
Disc diameter:	250mm
Spindle:	20mm
Weight:	21.5kg
Motor (W):	750

\$449.00 inc GST



Bench Grinder Linishing Attachment

Model:	BLA122
--------	--------

Specifications:	
Suitable bench grinders:	3/4" shaft
Power requirement:	600W
Belt size:	1220 x 50mm
Dimensions:	550 x 210 x 410mm
Weight:	7.3kg

\$389.00 inc GST

50mm Bench Grinder Linishing Attachment

Model:	BLA50
--------	-------

Specifications:	
Suitable bench grinders:	5/8" shaft
Power requirement:	250W
Belt size:	915 x 50mm
Dimensions:	410 x 120 x 200mm
Weight:	5.2kg

\$282.00 inc GST



250mm Wet Tile Cutter

Model:

TC250V

Designed for cutting all kinds of tiles: wall, floor, stone and brick.

Specifications:

Blade:

250 x 25.4mm

Max cutting depth 90°:

88mm

Max cutting depth 45°:

38mm

Max cutting width:

610mm

Weight:


42kg

Motor (W):

1,650

\$1,369.00

inc GST



Belt and Disc Sander

Model:

BD46C

Specifications:

Belt speed:

7.35 m/sec

Belt size:

100 x 914mm

Disc diameter:

150mm

Work table tilt:

45°

Belt table tilt:

90°

Motor (W):

370

Weight:

19kg

\$389.00

inc GST



Belt and Disc Sander

Model:

BD69F

Large belt and disc sander for serious wood sanding jobs. Stand included.

Specifications:

Belt size:

150 x 1,219mm

Belt speed:

5.3 m/s

Disc diameter:

230mm

Table size:

298 x 152mm

Table tilt:

0 – 45°

Weight:

58kg

Motor (W):

370

\$849.00

inc GST



Disc Sander

Model:

DS305

Glue backed sanding disc.

Specifications:

Disc diameter:

305mm

Table size:

440 x 156mm

Table tilt:

0 – 45°

Weight:

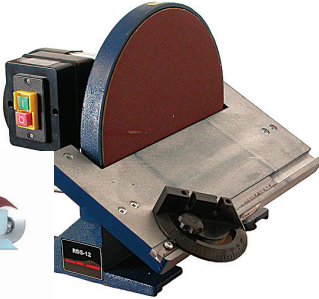
285kg

Motor (W):

750

\$569.00

inc GST





Tile Cutter

Model:

TC180

Portable tile cutter with coolant tray.

Specifications:

Blade:

180 x 22mm

Max cutting depth 90°:

34mm

Max cutting depth 45°:

21mm

Weight:

11.6kg

Motor (W):

450

\$259.00

inc GST



Belt Sander

Model:

HV80

Horizontal and vertical belt sander. Stand included.

Specifications:

Belt speed:

13 m/sec

Belt width:

152mm

Belt length:

2,010mm

Max sanding length:

790mm

Table tilt:

0 – 45°

Weight:

86kg

Motor (W):

1,100

\$1,693.00

inc GST





Oscillating Belt Sander

Model:

PE90

Horizontal and vertical belt sander with oscillating belt for fine sanding finish. Stand included.

Specifications:

Belt speed:

960 m/sec

Belt width:

152mm

Belt length:

2,515mm

Table travel:

80mm

Weight:

148kg

Motor (W):

2,200

\$2,679.00

inc GST



Sanding / Dust Collection



Dust collector	
Model:	DC10002
Motor:	1100W
Motor speed:	20000rpm
Inlet size:	94mm
Flux:	900m/h
Weight:	12kg
\$319.00 <small>inc GST</small>	

Hose Adapters included

Single Port Mini Dust Collector	
Model:	DC230
Dust collector for use in confined spaces. Single 100mm inlet.	
Specifications:	
Inlets:	1 x 100mm
Fan diameter:	230mm
Weight:	22kg
Motor (W):	750
\$529.00 <small>inc GST</small>	



Single Port Dust Collector	
Model:	DC101
Powerful 750 watt, single port dust collector, suitable for use in both professional and DIY workshop.	
Specifications:	
Inlets:	1 x 100mm
Fan diameter:	230mm
Weight:	30kg
Motor (W):	750
– Fine micron bag – 57 Litre collection capacity	
\$849.00 <small>inc GST</small>	



2 Port Dust Collector	
Model:	DC201
Two port, high power dust collector.	
Specifications:	
Inlets:	2 x 100mm
Speed:	2,850rpm
Fan diameter:	300mm
Weight:	47kg
Motor (W):	1,500
– Fine micron bag	
\$1,039.00 <small>inc GST</small>	



3 Port Dust Collector	
Model:	DC300
Dust collector for the larger workshop.	
Specifications:	
Inlets:	3 x 100mm
Fan diameter:	305mm
Weight:	52kg
Motor (W):	2,200
– Fine micron bag	
\$1,319.00 <small>inc GST</small>	



Router Table	
Model:	RT013
Specifications:	
Table size:	500 x 400mm
Table height:	360mm
Table thickness:	25mm
Table apertures:	20, 42, 90
Weight:	16kg
\$429.00 <small>inc GST</small>	



**WE CHOOSE THE
TOOLS WE STOCK
WITH CARE,
BASED ON THEIR
TRUE PERFORMANCE,
RELIABILITY AND
VALUE FOR
MONEY.**

Misc

Roller Stand

Model:	RS-57-9
--------	---------

Specifications:

Diameter of roller:	37mm
Operation height:	650 - 1,100mm
Weight:	31.8kg
Dimension:	1,680 x 510 x 190mm

\$519.00

inc GST



RS-57-9

Mitre Saw Stand

Model:	MSS2760
--------	---------

Sturdy, light-weight stand suits most brands of mitre saw. Quick release saw mounts, carry handle. Single leg adjustment.

Specifications:

Operation Height:	890mm
Operation Length:	1160-2760mm
Max Holding Weight:	150kg
Weight:	23kg

\$419.00

inc GST



Mitre Saw Stand

Model:	MSS3310
--------	---------

Sturdy, light-weight stand suits most brands of mitre saw. Quick release saw mounts, carry handle. Single leg adjustment.

Specifications:

Operation Height:	890mm
Operation Length:	1510-3310mm
Max Holding Weight:	150kg
Weight:	26kg

\$519.00

inc GST



Ball Roller Stand

Model:	RRS-A
--------	-------

Compact and adjustable roller stand provides support for long work pieces. Sturdy construction.

Specifications:

Stand type:	Roller
Operation height:	700 - 1,150mm
Tube diameter:	38mm
Weight:	10.5kg
Max holding weight:	200kg

\$149.00

inc GST



Jointer/Planer

Model:	J150D
--------	-------

Specifications:

Table:	1,210 x 255mm
Cutting width:	153mm
Max cutting depth:	12.7mm
Max rabbeting:	12.7mm
Weight:	119kg
Knives:	3
Motor (W):	750

- Stand included

\$1,939.00

inc GST



Jointer/Planer

Model:	J200C
--------	-------

Specifications:

Table:	1,800 x 330mm
Cutting width:	203mm
Max cutting depth:	12.7mm
Max rabbeting:	12.7mm
Weight:	184kg
Motor (W):	1,500

- Stand included

\$3,239.00

inc GST



Spindle Moulder

Model:	VSM50
--------	-------

Cast iron worktable 100mm dust port.

Specifications:

Speeds:	11,500 - 24,000rpm
Cutter shank diameter:	6/8/12mm
Spindle height:	0 - 40mm
Max cutter diameter:	50mm
Motor (W):	1,500
Weight:	21kg

\$879.00

inc GST



Universal Bench Grinder Stand

Model:	GS-B
--------	------

Stand to suit all Tooline Bench Grinders and mops.

Specifications:

Base:	390 x 390 x 70mm
Stand:	370 x 370 x 812mm
Weight:	15.5kg

\$169.00

inc GST

Ball Roller Stand

Model:	RRS-B
--------	-------

Compact and adjustable roller stand provides support for long work pieces. Sturdy construction.

Specifications:

Stand type:	Ball Roller
Operation height:	700 - 1,150mm
Tube diameter:	38mm
Weight:	10.5kg
Max holding weight:	200kg

\$145.00

inc GST



Dust Extractor Accessory - 4" Elbow

Model:	TLA804
--------	--------

\$35.00

incl GST



Dust Extractor Accessory - 4" Hose x 10 metres

Model:	TLA800
--------	--------

\$269.00

incl GST



Dust Extractor Accessory - 5" Y Splitter (to 4")

Model:	TLA808
--------	--------

\$35.00

incl GST

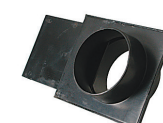


Dust Extractor Accessory - 4" Cap

Model:	TLA810
--------	--------

\$14.00

incl GST



Dust Extractor Accessory - 4" Blast Gate

Model:	TLA802
--------	--------

\$28.00

incl GST



Dust Extractor Accessory - 4" Y Connector

Model:	TLA806
--------	--------

\$28.00

incl GST



Misc

Portable Thicknesser

Model:	PT318
Anti kickback pawls. Return rollers. Dust deflection plate.	
Specifications:	
Min cutting length:	127mm
Max cutting width:	318mm
Max cutting depth:	3mm
Range of thickness:	5 - 153mm
Feed speed:	8 m/min
Cutter speed:	9,000rpm
Weight:	32kg
Motor (W):	2,000

\$969.00 inc GST



Blades Available

406mm Thicknesser

Model:	PT104
Industrial thicknesser. Three knives.	
Specifications:	
Table:	453 x 406mm
Max cutting width:	406mm
Max depth of cut:	4.1mm
Max thickness:	204mm
Cutter speed:	5,000rpm
Feed rates:	16,20fpm
Weight:	229kg
Motor (W):	1,800

\$3,709.00 inc GST



8 Piece Wood Turning Tool Set

Model:	TLA225
8 chisels in 65Nm steel. In plastic pouch.	

\$76.00 inc GST



6 Piece Wood Turning Tool Box Set

Model:	TLA218
6 chisels in HSS. In wooden case.	

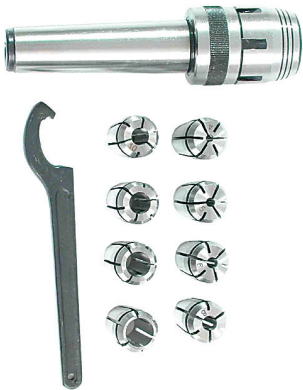
\$309.00 inc GST



Collet Chuck Set

Model:	ER 16 MT3
Collet chuck set MT3.	

\$297.00 inc GST



Collet Chuck Set

Model:	ER 16 MT4
Collet chuck set MT4.	

\$297.00 inc GST

Turning Tool Set 10mm

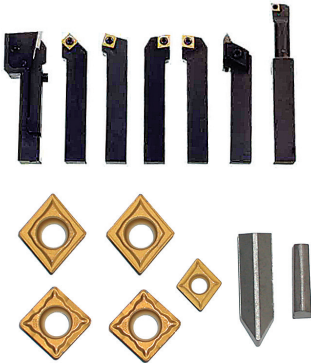
Code:	TLA210
7 piece.	

\$339.00 inc GST

Turning Tool Set of Tips 10mm

Code:	TLA211
7 tips for 10mm turning tools.	

\$199.00 inc GST



Turning Tool Sets 16mm

Code:	TLA214
7 piece,	

\$419.00 inc GST

Turning Tool Set of Tips 16mm

Code:	TLA215
7 tips for 16mm turning tools.	

\$199.00 inc GST



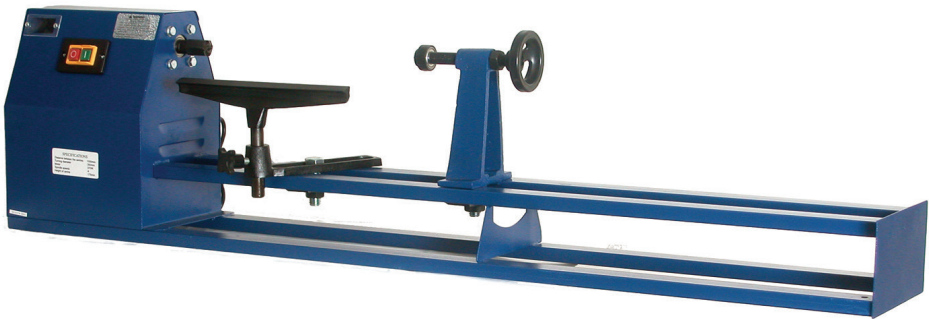
Lathes

Wood Lathe	
Model:	WL1000I
Lightweight wood lathe for the domestic workshop.	

Specifications:	
Speed range:	850 - 2,510rpm
Max turning diameter:	375mm
Distance between centres:	1,000mm
Weight:	27kg
Motor (W):	375

\$439.00

inc GST

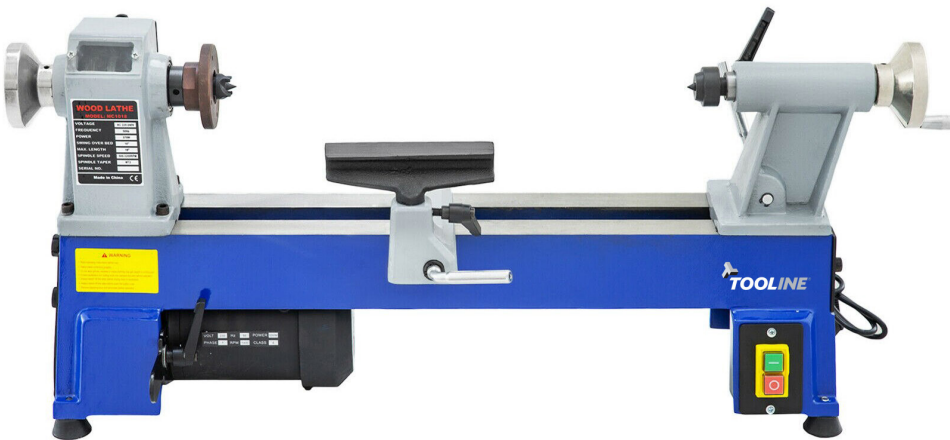


Wood Lathe	
Model:	WL457
Heavy duty wood lathe for the domestic workshop.	

Specifications:	
Speed range:	5, 760 - 3,700rpm
Max turning diameter:	245mm
Distance between centres:	457mm
Weight:	34kg
Motor (W):	370

\$869.00

inc GST

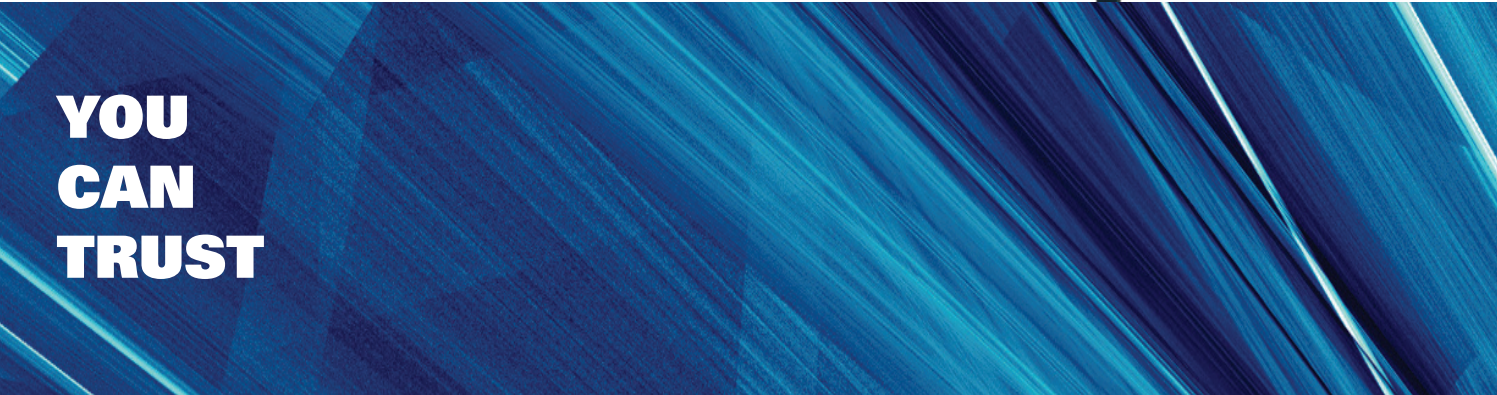


Wood Lathe	
Model:	WL1000FV
Variable speed for convenience. Head rotates for bowl turning. Comes with workstand.	

Specifications:	
Variable Speed:	500 - 2,000rpm
Max turning diameter:	310mm
Distance between centre:	910mm
Weight:	92kg
Motor (W):	550

\$1,198.00

inc GST

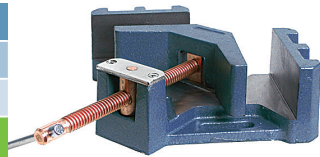


Vices

Welding Vice

Model:	WV100
Width:	100mm
\$143.00 inc GST	

Model:	WV125
Width:	125mm
\$249.00 inc GST	



Woodworking Vice Quick Release	
Model:	M70K
Width:	178mm
\$209.00 inc GST	

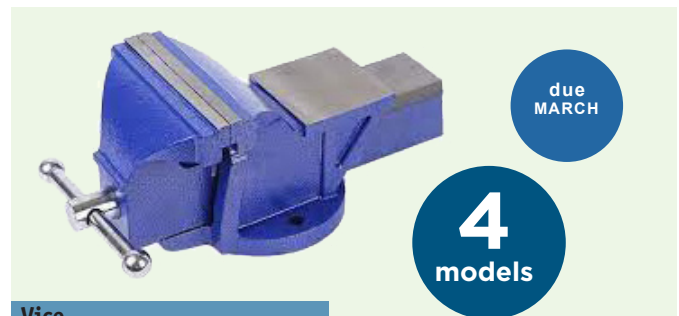
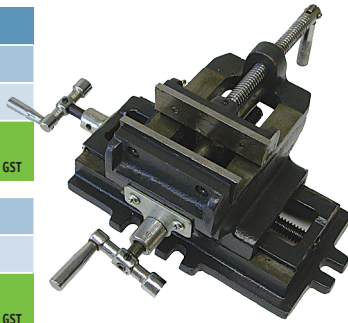
Model:	M80K
Width:	228.6mm
\$329.00 inc GST	

due
MARCH

Cross Slide Vice

Model:	CV4
Width:	100mm
\$154.00 inc GST	

Model:	CV6
Width:	150mm
\$247.00 inc GST	



due
MARCH

4
models

Vice

Model:	83103
Width:	75mm
\$92.00 inc GST	

Model:	83104
Width:	100mm
\$138.00 inc GST	

Model:	83105
Width:	125mm
\$215.00 inc GST	

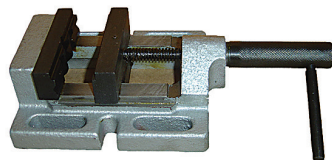
Model:	83106
Width:	150mm
\$309.00 inc GST	

Guild-screw Leading-in Vice

Model:	Q19100E
Width:	100mm
\$99.00 inc GST	

Model:	Q19120E
Width:	125mm
\$121.00 inc GST	

Model:	Q19150E
Width:	150mm
\$152.00 inc GST	



75mm Drill Press Vice

Model:	DPV3
\$38.00 inc GST	

100mm Drill Press Vice

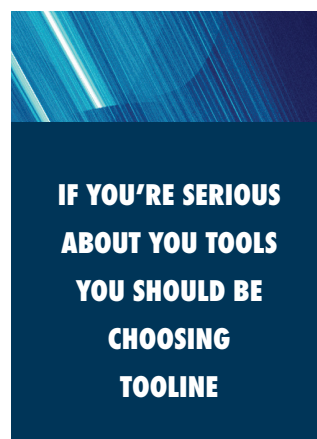
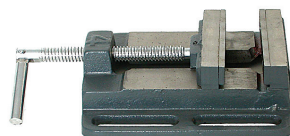
Model:	DPV4
\$48.00 inc GST	

125mm Drill Press Vice

Model:	DPV5
\$62.00 inc GST	

150mm Drill Press Vice

Model:	DPV6
\$72.00 inc GST	

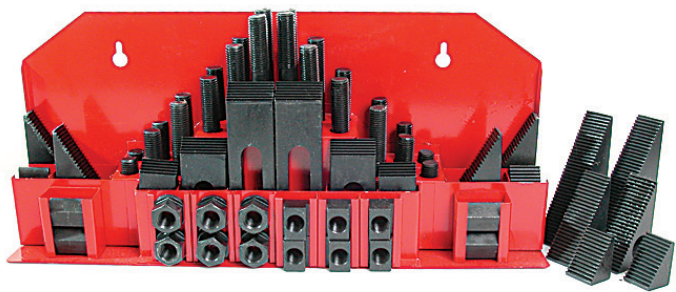


IF YOU'RE SERIOUS
ABOUT YOUR TOOLS
YOU SHOULD BE
CHOOSING
TOOLINE

Fox wedge	
Model:	FW125
Size:	3-8m
\$16.40 inc GST	

 [TOOLINE.CO.NZ](https://www.tooline.co.nz)

Accessories



58 Piece Steel Clamp Set M10	
Model:	SCK 10
\$194.00 <small>inc GST</small>	
58 Piece Steel Clamp Set M12	
Model:	SCK 12
\$215.00 <small>inc GST</small>	

58 Piece Steel Clamp Set M14	
Model:	SCK 14
\$247.00 <small>inc GST</small>	
58 Piece Steel Clamp Set M16	
Model:	SCK 16
\$339.00 <small>inc GST</small>	

Dovetail Jig	
Model:	DJ12
Comb:	1/2"
Max width:	300mm
Thickness:	8 – 32mm
Adjustable stops:	✓
\$339.00 <small>inc GST</small>	

Wheels (Mobile base)	
Model:	MB500
Wheel set for machines up to 220kg.	
\$229.00 <small>inc GST</small>	



Scroll Saw Sanding Stick	
Model:	SSR7-80
Size	7mm round
Grit	80
\$10.00 <small>inc GST</small>	
Model:	SSR7-120
Size	7mm round
Grit	120
\$10.00 <small>inc GST</small>	
Model:	SSR7-180
Size	7mm round
Grit	180
\$10.00 <small>inc GST</small>	



PERFORMANCE AND
VALUE FOR MONEY
ADD UP TO THE
RIGHT PRODUCT
FOR YOU. CHOOSE
WISELY, BASED ON
WHAT YOU GET FOR



We're always adding
and updating our
product range. If you
can't find what you're
looking for, ask...
or look online

QUALITY
&
PERFORMANCE

YOU CAN'T
TRUST YOUR WORK
TO SECOND BEST...

Nailers & Staplers



Heavy Duty Framing Nailer

Code:	CHF9034C
Nail Size:	2.9 - 3.3mm
Nail Length:	50 - 90mm
Carry case.	

\$257.00 inc GST



Heavy Duty Finishing Nailer

Code:	T64C
Nail Size:	Ga 16
Nail Length:	25 - 64mm
Carry case.	

\$199.00 inc GST



2-1 Air Braid Nailer / Narrow Crown Stapler

Code:	SF5040
Nail Size:	Ga 18
Staple Size:	Ga 18
Nail Length:	10 - 50mm
Staple Length:	16 - 40mm
Carry case.	

\$99.00 inc GST

Narrow Crown Stapler

Code:	9040C
Staple Size:	Ga 18
Staple Length:	16 - 40mm
Carry case.	

\$99.00 inc GST



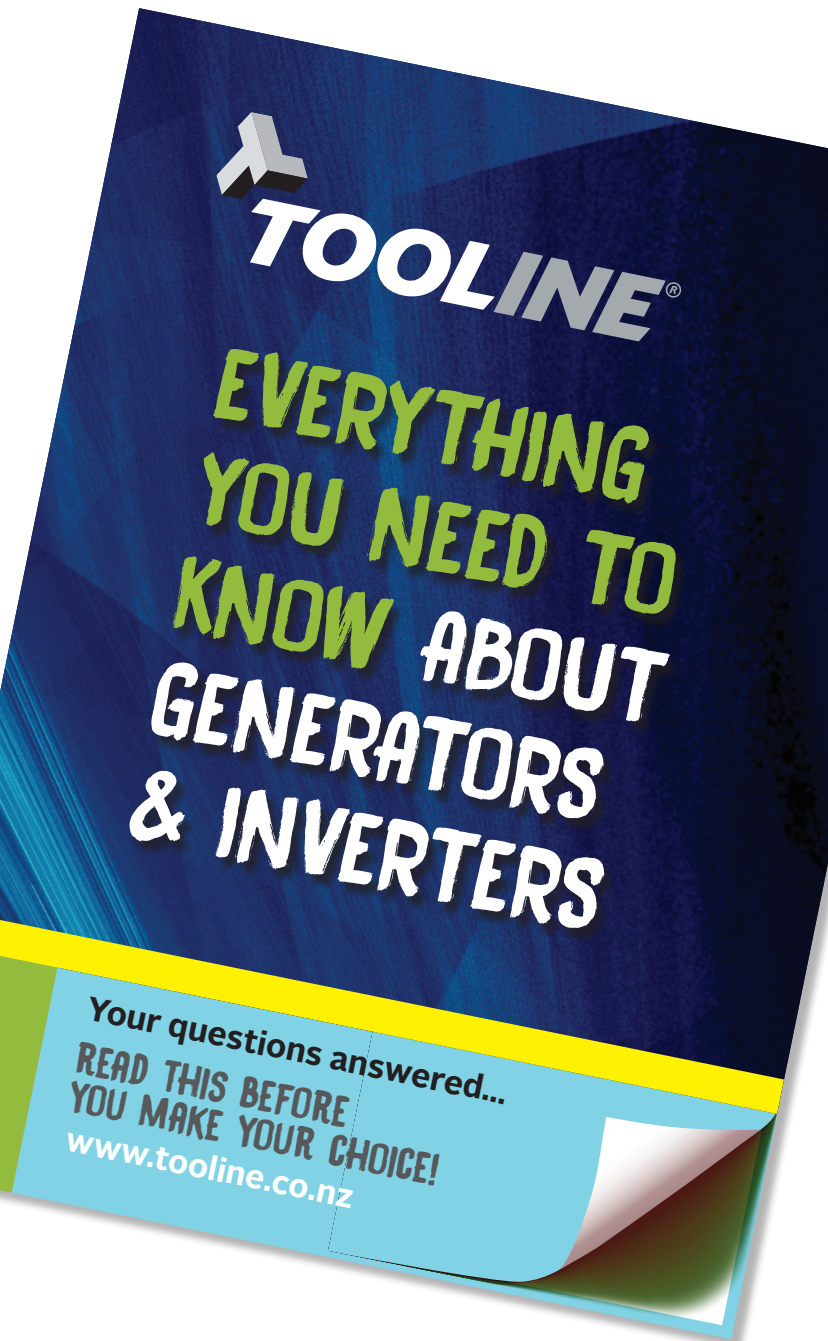
Wide Crown Stapler

Code:	8016
Staple Size:	Ga 21
Staple Length:	6 - 16mm
Carry case.	

\$89.00 inc GST



See our special guide to
**GENERATORS
& INVERTERS**



Compressors Direct Drive

Compressor – Single Phase, Direct Drive

Model: AC2025
General purpose compressor.

Specifications:

Pump displacement: 200 l/min
Free air delivery: 122 l/min
Weight: 22.5kg
Tank (l): 24 **Motor (W):** 1,500

\$342.00

inc GST



Compressor – Single Phase, Direct Drive

Model: AC2041
General purpose compressor.

Specifications:

Pump displacement: 200 l/min
Free air delivery: 122 l/min
Weight: 30kg
Tank (l): 40 **Motor (W):** 1,500

\$449.00

inc GST



Compressor – Single Phase, Direct Drive

Model: AC2551
50 Litre compressor when extra air storage is required.

Specifications:

Pump displacement: 230 l/min
Free air delivery: 140 l/min
Weight: 35.5kg
Tank (l): 50 **Motor (W):** 1,800

\$479.00

inc GST



Compressor – Single Phase, Direct Drive

Model: AC3050V
50 Litre tank, twin cylinder for quiet running.

Specifications:

Pump displacement: 356 l/min
Free air delivery: 215 l/min
Tank (l): 50 **Motor (W):** 2,200

\$679.00

inc GST



When you're working with tools, you should be working with Tooline.

Compressors Belt Drive

Compressor – Single Phase, Belt Drive

Model:	AC2250
--------	--------

Specifications:

Pump displacement:	312 l/min
Free air delivery:	187 l/min
Tank (l):	50
Motor (W):	2,000

\$1,019.00 inc GST



Compressor – Single Phase, Belt Drive

Model:	CCS50-268
--------	-----------

- Controlled cooling system
- High pressure - 145psi.

Specifications:

Pump displacement:	280 l/min
Free air delivery:	188 l/min
Tank (l):	50
Motor (W):	1,500

\$1,269.00 inc GST



Compressor – Single Phase, Belt Drive

Model:	CCS50-360
--------	-----------

- Controlled cooling system
- High pressure - 145psi.

Specifications:

Pump displacement:	334 l/min
Free air delivery:	247 l/min
Tank (l):	50
Motor (W):	2,200

\$1,419.00 inc GST



Compressor – Single Phase, Belt Drive

Model:	Puma 17
--------	---------

An additional cylinder (3 in total) makes this suitable for most industrial air tools. Tough and efficient, it runs smoothly and provides for all of your compressor needs. Low current draw at cut-out.

Specifications:

Pump displacement:	420 l/min
Free air delivery:	305 l/min
Tank (l):	58
Motor (W):	2,200

\$2,519.00 inc GST



Compressors Oilless

6L Oilless Compressor

Model:	AC600L
--------	--------

Specifications:

Free air delivery:	100 l/min
Tank (l):	6
Motor (W):	750

\$449.00 inc GST



Compressor – Single Phase, Oilless

Model:	AC10240L
--------	----------

Specifications:

Free air delivery:	100 l/min
Tank (l):	24
Motor (W):	750

\$462.00 inc GST



Compressor – Single Phase, Oilless

Model:	AC10500L
--------	----------

Specifications:

Free air delivery:	100 l/min
Tank (l):	50
Motor (W):	750

\$521.00 inc GST



Compressor – Single Phase, Oilless

Model:	AC20500L
--------	----------

Specifications:

Free air delivery:	200 l/min
Tank (l):	50
Motor (W):	1500

\$865.00 inc GST



Compressors Petrol

Compressor – Petrol

Model: AC24/50

A lightweight and convenient compressor that's easily transportable. Auto idle.

Specifications:

Pump displacement:

312 L/min

Free air delivery:

187 L/min

Tank (l):


50

Motor (HP):

6.5 Lifan

\$1,349.00

inc GST



Compressor – Petrol

Model: PUMA 55209

A lightweight and convenient compressor that's easily transportable. Auto idle.

Specifications:

Pump displacement:

Free air delivery:

311 L/min

Tank (l):


75

Motor (HP):

5.5hp Honda

\$2,799.00

inc GST



Compressor – Petrol

Model: PUMA 30

A lightweight and convenient compressor that's easily transportable. Auto idle.

Specifications:

Pump displacement:

97 L/min

Free air delivery:

660 L/min

Tank (l):


120

Motor (HP):

11hp Honda

\$6,198.00

inc GST



Compressors Three Phase



Compressor – 3 Phase

Model: Puma 28

Specifications:

Pump displacement:

970 L/min

Free air delivery:

610 L/min

Tank (l):


170

Motor (W):

4,000

\$4,229.00

inc GST



Compressor – 3 Phase

Model: Puma 55

Specifications:

Pump displacement:

1,680 L/min

Free air delivery:

1,190 L/min

Tank (l):


259

Motor (W):

7,500

\$5,987.00

inc GST



Compressor Oil

Model: TLA 470

1 Litre

\$32.00

inc GST



Airtool Oil

Model: TLA 472

250mL

\$12.50

inc GST



TOOLINE®

SHOULD BE YOUR
FIRST CHOICE
FOR VALUE AND
PERFORMANCE

YOU
NEVER
REGRET
BUYING
A GOOD
PRODUCT

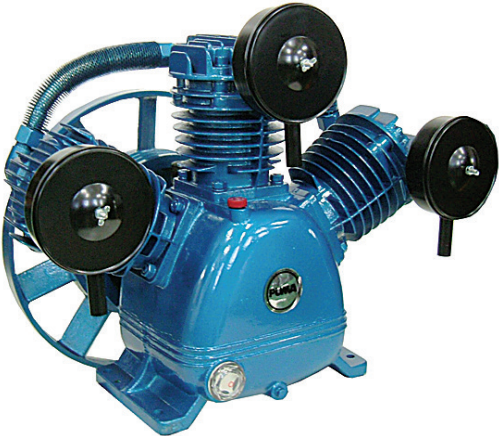




Bare Pump

Model:	PE75
Suitable for Puma 28.	
Specifications:	
Displacement:	970 l/min

\$1,539.00inc GST



Bare Pump

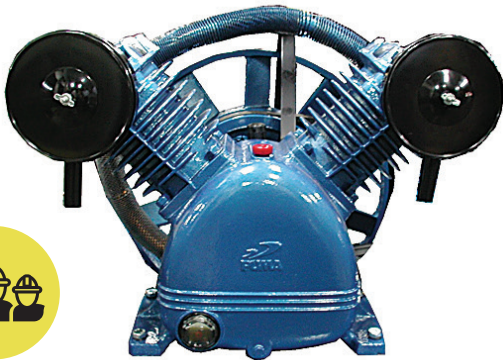
Model:	PE150
Suitable for Puma 55.	
Specifications:	
Displacement:	1,680 l/min

\$2,890.00inc GST

Bare Pump

Model:	PE100
Suitable for Puma 40.	
Specifications:	
Displacement:	1,215 l/min

\$2,190.00inc GST



Pressure Washer – Petrol

Model:	PW2801
2,800psi pressure washer with turbo lance and 5 quick nozzles.	
Maximum pressure:	2,800psi
Motor (HP):	6.5 Loncin
Water flow:	11.3 l/min
Weight:	35kg

\$1,119.00inc GST



Pressure Washer - Petrol

Model:	PW3600
Impressive 3,600psi pressure washer with turbo lance and 5 quick nozzles.	
Maximum pressure:	3,600psi
Motor (HP):	13 Loncin
Water flow:	17 l/min
Weight:	59kg

\$2,119.00inc GST



IF YOU
HAVE ANY
QUESTIONS
VISIT OUR
WEBSITE OR
CALL US FOR
FURTHER
DETAILS

Air Tools - Professional



**TRADE
CHOICE**



Die Grinder

Code: AT-7033LM
6mm extended nose.

\$154.00 inc GST



Die Grinder

Code: AT-7033(M)
6mm heavy duty.

\$99.00 inc GST



Die Grinder

Code: AT-7132M
6mm medium duty.

\$122.00 inc GST



Die Grinder

Code: AT-7132MK
16 Piece, 6mm die grinder kit.

\$184.00 inc GST



Die Grinder

Code: AT-7134M
6mm medium duty die grinder (right angle).

\$169.00 inc GST



Drill

Code: AT-4031
3/8" reversible.

\$153.00 inc GST



Drill

Code: AT-4035
Medium duty 3/8" angle.

\$246.00 inc GST



Drill

Code: AT-4038
Medium duty 3/8" straight (2,600rpm).

\$138.00 inc GST



Drill

Code: AT-4141
Heavy duty 1/2" reversible with slide handle and geared chuck.

\$293.00 inc GST



Impact Wrench

Code: AT-5044K
1/2" heavy duty impact wrench kit.

\$479.00 inc GST



Impact Wrench

Code: AT-5056
3/8" heavy duty ratchet wrench.

\$199.00 inc GST



Impact Wrench Kit

Code: AT-5056K
3/8" heavy duty ratchet wrench with 17 piece kit.

\$262.00 inc GST



Impact Wrench

Code: AT-5057
1/2" heavy duty ratchet wrench.

\$192.00 inc GST



Impact Wrench

Code: AT-5066L
3/4" heavy duty 3/4" drive with twin hammer.

\$989.00 inc GST
(\$929.00 for AT-5066)



Impact Wrench

Code: AT-5088
1" heavy duty 1" drive and 8" anvil. Double hammer mechanism.

\$2,958.00 inc GST



Impact Wrench

Code: AT-5133
3/8" impact wrench (jumbo hammer).

\$423.00 inc GST



Impact Wrench

Code: AT-5130
3/8" impact wrench (rocking dog - butterfly).

\$195.00 inc GST



Impact Wrench

Code: AT-5141
1/2" impact wrench with pin clutch.

\$386.00 inc GST



Impact Wrench

Code: AT-5148
1/2" impact wrench with twin hammer.

\$572.00 inc GST



Air Tools - Professional



Spray Gun

Code: AS-1001

Heavy duty, gravity feed.

\$215.00

inc GST



Spray Gun

Code: AS-1002

Gravity air spray gun with 600cc cup.

\$229.00

inc GST



Spray Gun

Code: AS-1040R

High pressure spray gun (simple control).

\$199.00

inc GST



Spray Gun with Pot

Code: AS-1070

2 Litre spray tank with spray gun.

\$491.00

inc GST



Spray Gun with Tank

Code: AS-1180

2 1/4 gallon paint tank with spray gun.

\$835.00

inc GST



Orbital Sander

Code: AT-7004DS

Heavy duty 150mm sander with stick pad.

\$495.00

inc GST



Belt Sander 10 x 33mm

Code: AT-7009

Heavy duty finger sander 25/64" x 13" (10 x 33mm).

\$262.00

inc GST



Belt Sander 20 x 520mm

Code: AT-7010

Heavy duty belt type sander 20 x 520mm.

\$419.00

inc GST



Angle Grinder – 100mm

Code: AT-7036

100mm level throttle type, medium duty angle grinder.

\$299.00

inc GST



Angle Grinder – 125mm

Code: AT-7037

125mm level throttle type, medium duty angle grinder.

\$329.00

inc GST



Hydraulic Riveter 3/16" Medium Duty

Code: AT-6015

3/16" hydraulic riveter (medium duty).

\$231.00

inc GST



Hydraulic Riveter 3/16" Kit

Code: AT-6015K

3/16" hydraulic riveter kit (medium duty).

\$324.00

inc GST



Hydraulic Riveter 3/16" Heavy Duty

Code: AT-6218

3/16" hydraulic riveter (heavy duty).

\$799.00

inc GST



Impact Screwdriver

Code: AT-4063

Low rotational speed screwdriver (2,500rpm).

\$254.00

inc GST



Cushion Clutch Screwdriver – Slow Revving

Code: AT-4080A

Adjustable clutch screwdriver piston type 800rpm.

\$262.00

inc GST



Metal Shears

Code: AT-6021

\$184.00

inc GST



3" Cut Off Tool

Code: AT-6027

Medium duty, 73mm disc.

\$107.00

inc GST



Body Saw

Code: AT-6011

Medium duty, front exhaust.

\$199.00

inc GST



Body Saw (Front Exhaust) Kit

Code: AT-6011K

Medium duty, body saw with 18 piece kit.

\$279.00

inc GST



Nibbler

Code: AT-6025

\$184.00

inc GST



For more information on any product go to tooline.co.nz

Air Tools

Sand Blasting Kit

Code: AA-3071

Sand blasting kit.

\$68.00 inc GST



Flux Chipper

Code: AT-2501

Heavy duty industrial flux chipper.

\$499.00 inc GST



Needle Scaler

Code: AT-2500

Heavy duty needle scaler.

\$499.00 inc GST



Blow Gun

Code: AA-3011

Aluminum blow gun.

\$19.00 inc GST



Wonder Gun Kit

Code: AA-5005

Wonder gun kit.

\$92.00 inc GST



Polisher

Code: AT-7074

7" angle polisher, medium duty.

\$293.00 inc GST



Filter/Regulator

Code: AA-2120FR

Control unit for PUMA 15, 17 compressors.

\$127.00 inc GST



Hammer

Code: AT-2015

Medium duty 190mm hammer (round).

\$153.00 inc GST



Air Speed Nailer

Code: AT-3100

1,000bpm.

\$324.00 inc GST



Under Coating Gun

Code: AA-5001

Under coating gun.

\$72.00 inc GST



Tyre Gauge

Code: AA-6004

Professional 3 function tyre gauge.

\$153.00 inc GST



Tyre Gauge

Code: AA-6008

Professional 3 function tyre gauge.

\$53.00 inc GST



Hammer 9 Piece Kit

Code: AT-2012KR

Medium duty hammer with 9 piece kit.

\$215.00 inc GST



Needle Scaler

Code: AT2505

Heavy duty needle scaler.

\$499.00 inc GST



Blow Gun

Code: AA-5006-3

300mm tube.

\$19.00 inc GST

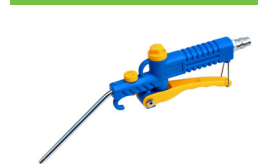


Blow Gun

Code: AA-5018

110mm tube, adjustable flow.

\$22.00 inc GST



Blow Gun

Code: AA-5018-3

340mm tube, adjustable flow.

\$26.00 inc GST



Blow Gun

Code: AA-50180-5

500mm tube, adjustable flow.

\$31.00 inc GST



Nylon hose 1/4"

Code: AA-1012

1/4" x 25' nylon hose.

\$13.60 inc GST



PU Braid recoil hose

Code: AH-0365-25

25' x 10mm hose with 1/4 NPT fitting.

\$61.00 inc GST



Coupler

1/4" Connector male in display pack

\$2.40 Code: AP 1/4 M inc GST

1/4" Female connector in display pack

\$2.40 Code: AP 1/4 F inc GST



Quick Coupler

1/4" female in display.

\$7.50 Code: QC1/4F inc GST

1/4" male in display pack.

\$7.50 Code: QC1/4M inc GST



Hose Barb

1/4" Connector with hose barb in display pack.

\$2.40 inc GST

1/4" Connector with hose barb in display pack.

\$2.40 Code: HB1/4BSP inc GST



Hex Nipple

Code: PE1024

1/4" x 1/4" BSP coupler in display pack.

\$6.70 inc GST



Swivel

1/4" swivel connection.

\$23.00 AR-3010 inc GST



Tyre Inflating Gun

Code: RP 8037-2

150psi rated pressure.

\$29.00 inc GST



Speed Nailer

Code: MSN90

Nail head width: 3-11mm

Max nail length: 90mm

\$149.00



5 Piece Quick Coupler

Code: AA-4022

1/4" 5 piece quick couple kit.

\$29.50 inc GST



2-Way Quick Coupler

Code: AQC-2B

1/4" 2-way quick coupler.

\$37.00 inc GST



3-Way Quick Coupler

Code: AQC-3A

1/4" 3-way quick coupler.

\$56.00 inc GST



3-Way Quick Coupler

Code: AQC-3B

1/4" 3-way quick coupler.

\$56.00 inc GST



Needle Set - 3 piece

Code: RP 8049

For bicycles, balls, tubes, etc.

\$16.00 inc GST



Air Body Saw

Code: RP 7602

\$79.90 inc GST



RP8055

Code: RP8055

\$14.00 inc GST



Die Grinder Kit

Code: RP 27313K

14 piece die grinder kit.

\$62.00 inc GST



Cut off tool

Code: RP 27620

Air consumption: 128 l/m

\$64.00 inc GST



Airless Paint Sprayer

Model: R 515

Solid, heavy duty metal construction.

Max tip size (Single gun): 0.025"

Max tip size (Twin gun): 0.019"

Max pressure: 3,300psi

Max flow rate: 3.5 l/min

Hose: 15m

Motor: 2200W

Weight: 19kg

\$2,141.00 inc GST

RP8054

Code: RP8054

\$22.00 inc GST





What you need to know about *Airless Spraying*

**INSIDE OR OUT - BIG OR SMALL SPACES
ROOF, WALLS, FENCES | TIME-SAVING SUPER FINISH**

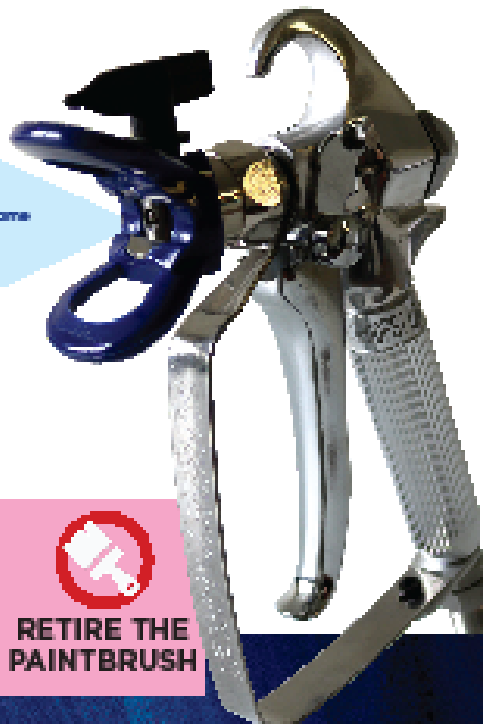
Get one now.
Paint sprayers are
a great tool for **EVERYONE**.
It used to be something you'd only
expect professionals to use, but now
they're easier and more accessible for all of us.
Whether you're working as a painter, or doing some
DIY, we've got the airless sprayer for you.
Inside or out, they're quick and easy
to use and can give that really slick,
professional looking finish.
Get the right tool for the
job... read more here
See inside

FAST & EASY

TRULY PROFESSIONAL

PRICED FOR YOUR BUDGET

**CONSIDERABLE RANGE
OF MODELS**



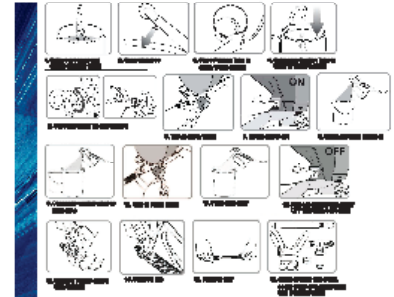
**RETIRE THE
PAINTBRUSH**

Cleaning up

When you're finished spraying, spray, but you're not done.

Remember you need to take your paint sprayer apart and clean it after every use.
If you don't, it will clog up and a clogged filter or tip can also clog the nozzle.
You don't want to be cleaning things when it's time to clean up after yourself.
Make sure you're ready to go when you need to clean your sprayer.

Here's a step-by-step guide to cleaning.



*It's easy to keep your
airless sprayer in top
condition and
after the first time,
it's so easy to do to
ensure your unit
will be ready for its
next job...*

Clear your tips with some short burst of
water with the tip set to "Reverse".
Clean tips with a soft brush. If you're
storing them for a while, do so in a
sealed container of water or solvent.
Clean and check your filter. If it's more
than 20% clogged, replace the filter.
Do multiple rinses to clean your entire
sprayer.
Start with a dry rinse and a clean rinse,
then another rinse with clean water.
If you're storing your sprayer over-
night, water is OK, but it's better to
demonstrate not to store the unit under
pressure.

It's all about your paint

*While most of paint is white or white, you can get it right.
Many sprayers use unadorned paint but some need to be
with a lighter shade. Technically, this is called base viscosity.
Other paints, at their own consistency, can be too
thick for a standard paint sprayer and can clog
your gun.*

In these instances, be sure to dilute your solution
according to the manufacturer's advice that comes with
your sprayer or that is included on the paint can or
the manufacturer's website. Your paint will go further
and your body will get a smoother, more consistent
coverage.

Most temperatures for spraying depend on what type
of paint you're using.
For Oil-based Paints (Exclusively between 4°C and
25°C)

For Water or Latex-based Paints (Exclusively between 10°C and 25°C)

Many paint suppliers have helpful information about
their products, which tips can be used with which
formulations and other important details.
Don't be afraid to ask. We help you to get the best
possible result.

...and don't forget about the primer.



Many coatings combine base coats. Primer.

A bonding agent.

This helps the coating together.

Primer.

Many coatings combine base coats. Primer.

A bonding agent.

This helps the coating together.

Primer.

Many coatings combine base coats. Primer.

A bonding agent.

This helps the coating together.

Primer.

Many coatings combine base coats. Primer.

A bonding agent.

This helps the coating together.

Primer.

Many coatings combine base coats. Primer.

A bonding agent.

This helps the coating together.

Primer.

Many coatings combine base coats. Primer.

A bonding agent.

This helps the coating together.

Primer.

Many coatings combine base coats. Primer.

A bonding agent.

This helps the coating together.

Primer.

Many coatings combine base coats. Primer.

A bonding agent.

This helps the coating together.

Primer.

Many coatings combine base coats. Primer.

A bonding agent.

This helps the coating together.

Primer.

Many coatings combine base coats. Primer.

A bonding agent.

This helps the coating together.

Primer.

Many coatings combine base coats. Primer.

A bonding agent.

This helps the coating together.

Primer.

Many coatings combine base coats. Primer.

A bonding agent.

This helps the coating together.

Primer.

Many coatings combine base coats. Primer.

A bonding agent.

This helps the coating together.

Primer.

Many coatings combine base coats. Primer.

A bonding agent.

This helps the coating together.

Primer.

Many coatings combine base coats. Primer.

A bonding agent.

This helps the coating together.

Primer.

Many coatings combine base coats. Primer.

A bonding agent.

This helps the coating together.

Primer.

Many coatings combine base coats. Primer.

A bonding agent.

This helps the coating together.

Primer.

Many coatings combine base coats. Primer.

A bonding agent.

This helps the coating together.

Primer.

Many coatings combine base coats. Primer.

A bonding agent.

This helps the coating together.

Primer.

**You can paint or coat anything more quickly.
Added speed means you get done in less time,
with less work. And that's really important if
you've got limited time - outside for example
with a short weather window. It's been
estimated airless spraying is up to ten times
faster than using a standard paint brush!**

Airless systems don't use compressed air - as the name
suggests, but rather high pressure and a tip to regulate
the flow.

In field trials, airless
sprayers have been
shown to be up to

10x FASTER

than using conventional
paint brushes.

Air Tools - Home Series

VALU-AIR
Air Tools

RONGPENG

VOYLET

Spray Gun	
Code:	AB17S
HVL P Spray Gun. 1,000ml cup.	
\$99.00	inc GST



Touch Up Spray Gun	
Code:	M308
High pressure 200ml cup.	
\$59.00	inc GST



Air Brush Set	
Code:	ABS1
\$38.00	inc GST



Spray Gun Kit - 5 Piece	
Code:	AK-6
5 piece suction spray gun kit.	
\$112.00	inc GST



Spray Gun Cleaning Kit - 13 Piece	
Code:	CK130
\$9.60	inc GST



Body Washing Gun	
Code:	D0-60
Rated pressure 90psi.	
\$33.00	inc GST



Mini Oil Free Compressor	
Code:	V505
150W, 42.5psi.	
\$209.00	inc GST



Air Blow Gun 100mm	
Code:	PDE-10
\$15.20	inc GST



R827B	
Code:	R827B
R827B	
\$82.00	inc GST



Air Blow Gun	
Code:	K-601-1
Metal body.	
\$19.50	inc GST



Spray gun	
Code:	RP4001
\$82.00	inc GST



Low pressure spray gun	
Code:	RP472
\$45.00	inc GST



TOOLINE

Your guide to COMPRESSORS:

OUR AIR FORCE.

Harnessing the air around us for your air tools is what a compressor does. It stores air at a predetermined pressure, releases it through the right couplings and hoses, and then releases it through the right spray gun - very different from the right (color) to operate with. We have 4 models in the range reaching up to 140psi (color). Choose from this wide selection. We have an efficient, high performing compressor to suit...and at the right price.

HOW DO YOU CHOOSE BETWEEN ONE TO BEST SUIT YOUR NEEDS?

Choose from three types of air compressors: direct drive, oil-free direct drive or belt drive. Check direct drive compressors have 100% efficiency. Oil-free direct drive compressors are relatively quiet and effective. Oil-free direct drive compressors have shorter hoses but are very quiet and don't require oil changes. Belt drive compressors are 100% efficient and don't require oil changes. Belt drive compressors that require oil changes have longer hoses and are louder. Belt drive compressors are 100% efficient and don't require oil changes. Belt drive compressors are 100% efficient and don't require oil changes. Belt drive compressors are 100% efficient and don't require oil changes.

At a glance:

- Air compressors take the standard air that we breathe and literally 'compress' it - under pressure, storing it in tanks to use as you need it.
- If you sleep on a cheaper, less efficient option, your tool may not work as it should because it won't have enough pressure.
- Match your compressor's RAD (Free Air Delivery) to the capacity needed by your air tools. Remember that more is better. At least 100% extra is a good guide. RAD is measured by an Australian protocol.
- Choose the size and drive system you need, based on your requirements, including portability.

Backed by Tooline Warranty!

There's a COMPRESSOR to suit you

FOR BEST POWER OUTPUT

TOOLINE.CO.NZ

Puma Double Diaphragm Pump

Model:	SP-1580
Specifications:	
Pressure ratio:	1:1
Air pressure:	1-5kg/cm ²
Delivery 5L:	0.4 kg/cm ²
Delivery 7.5L:	1 kg/cm ²
Delivery 10.5L:	2 kg/cm ²
Weight:	10.5kg

\$1,224.00 inc GST



Rongpeng Diaphragm Pump

Model:	R8411
Suitable for all kinds of liquid.	
Pressure ratio:	1:1
Operating pressure:	4 - 7 bar
Max. free flow:	10 l/min
Weight:	7.6kg

\$619.00 inc GST



Rongpeng Air Agitator

Model:	R8410
Started by low pressure, highly flexible agitation for all kinds of paint	
Free speed:	2,000rpm
Total height:	650mm
Stirrer height:	350mm
Support frame height:	430mm
Weight:	

\$589.00 inc GST

Hoses



Rubber Braid Air Hose	
Code:	AH-13A13025
Rubber braid hose with ARO fitting 25'	
\$96.00 <small>inc GST</small>	

Rubber Braid Air Hose	
Code:	AH-13A13050
Rubber braid hose with ARO fitting 50'	
\$179.00 <small>inc GST</small>	

10m Rubber Air Hose	
Code:	R1016
Roll of 3/8" rubber air hose with 1/4" ARO fittings.	
\$58.00 <small>inc GST</small>	

20m Rubber Air Hose	
Code:	R2016
\$99.00 <small>inc GST</small>	



10m PVC Air Hose	
Code:	PVC1016
Roll of 3/8" PVC air hose with 1/4" ARO fittings.	
\$38.00 <small>inc GST</small>	

30m PVC Air Hose	
Code:	PVC3016
\$92.00 <small>inc GST</small>	

20m PVC Air Hose	
Code:	PVC2016
\$60.00 <small>inc GST</small>	

100m PVC Air Hose	
Code:	PVC10016
No fitting	
\$254.00 <small>inc GST</small>	

Outdoor / Gardening

Concrete Mixer

Model:	CM125
Specifications:	
Drum capacity:	125 Litres
Drum mouth:	385mm
Weight:	60kg
Motor (W):	550

\$749.00

inc GST



Concrete Mixer

Model:	CM130
Specifications:	
Drum capacity:	130 Litres
Drum mouth:	385mm
Weight:	52kg
Motor (W):	550

\$749.00

inc GST



Plate Compactor - Petrol

Model:	PC63
Vibratory, heavy duty. Wheels and water tank included.	
Plate size:	515 x 390mm
Motor (HP):	5.5 Loncin
Compaction depth:	25cm
Travel speed:	25 m/min
Weight:	63kg

\$1,194.00

inc GST



Log Splitter - Petrol

Model:	LS28
Specifications:	
Splitting force:	28 Ton
Log capacity:	650mm
Motor (HP):	6.5 Briggs & Stratton
Weight:	230.6kg

\$3,520.00

inc GST



Log Splitter - Electric

Model:	LS5
Specifications:	
Splitting force:	5 Ton
Log capacity:	520mm long 350mm diameter
Motor (W):	2,200
Weight:	45kg

\$671.00

inc GST



Rear Tine Tiller

Model:	RTT450
Dual rotating.	
Speeds:	1F & 1R
Motor (HP):	6.5 Loncin
Tilling width:	450mm
Tilling depth:	330mm
Weight:	92kg

\$2,219.00

inc GST



Plate Compactor - Petrol

Model:	PC86
Vibratory, heavy duty. Wheels included.	
Plate size:	540 x 420mm
Motor (HP):	6.5 Loncin
Compaction depth:	30cm
Weight:	86kg

\$1,239.00

inc GST



**INSIDE OR OUT,
TOOLINE IS
YOUR CHOICE**

Metal Lathes & Drill Mills

Metal Lathe

Model:	CQ6125VX550
Distance between centres	550mm
Engine:	550W
Spindle speeds (6):	125 - 200rpm
Swing over bed:	250mm
Weight:	112kg



Metal lathe

Model:	CQ6240X1000
Swing over bed:	400mm
Swing over gap:	520mm
Spindle speeds:	65 - 1810rpm
Spindle base:	52mm
Between centres:	1080mm
Max cross slide:	180mm
Weight:	640kg
Width of bed:	218mm
Motor:	2000W



Metal lathe

Model:	CQ6230X1000
Swing over bed:	310mm
Swing over gap:	450mm
Spindle speeds:	65 - 1810rpm
Spindle base:	38mm
Max cross slide:	130mm
Max top slide:	75mm
Max tail stock quill:	100mm
Width of bed:	181mm
Motor:	1500W



Drill Mill

Model:	ZX7045
Max drilling capacity:	45mm
Max milling capacity:	Face 80mm end 32mm
Spindle taper:	MT4
Table dimensions:	800 x 240mm
Weight:	590kg
Spindle stroke:	120mm
Spindle Speed 1:	75 - 1600
Spindle Speed 2:	150 - 1600
Motor:	1500 Watts

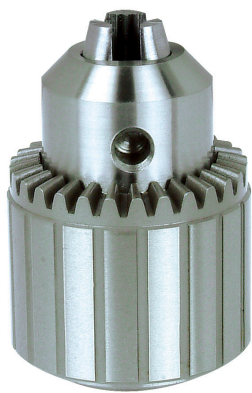


Drill Mill

Model:	ZX45
Max drilling capacity:	45mm
Max milling capacity:	Face 80mm end 32mm
Spindle taper:	MT4
Table dimensions:	800 x 240mm
Weight:	390kg
Spindle stroke:	120mm
Spindle Speed 1:	75 - 1600
Motor:	1500 Watts

Chucks, Chuck keys, and Arbours

Geared Chucks



Code	Clamping width (mm)	Female thread	Key size
TLA5254	1-10	3/8" - 24UNF	2
TLA5304	1-13	1/2" - 20UNF	2
TLA5036	1-13	B16	2
TLA5050	3-16	B16	3
TLA5049	3-16	B18	3
TLA5058	5-20	B22	4

Chuck Keys



Code	Key size
TLA5165	1
TLA5167	2
TLA5168	3
TLA5169	4

Keyless Chucks

Code	Clamping width (mm)	Female thread	Hand
TLA6620	1-13	1/2" - 20UNF	2
TLA6621	1-13	1/2" - 20UNF	1



Code	Clamping width (mm)	Female thread	Hand
TLA6353	1-13	B16	2
TLA6361	3-16	5/8" - 16 UN	2
TLA6602	1-13	1/2" - 20UNF	2



Taper Arbours for Chucks



Code	Morse taper	Chuck taper
TLA5115	2	B16
TLA5116	2	B18
TLA5125	3	B16

Cordless vacuum

Code:	ISC BARTRX L 36-18V
Class:	L
Capacity:	28L
Voltage:	2x18V
Suction:	213 mbar
Air flow:	38 L/s
Weight:	12.5kg



Cordless vacuum

Code:	ISC BARTRX M 36-18V
Class:	M
Capacity:	28L
Voltage:	2x18V
Suction:	213 mbar
Air flow:	38 L/s
Weight:	12.5kg



Wet, dry vacuum

Code:	iPulse L-1635
Class:	M
Capacity:	35L
Power:	1,600 (W)
Suction:	229 mbar
Air flow:	64 L/s



Wet, dry vacuum

Code:	iPulse L-1635
Class:	H
Capacity:	35L
Power:	1,600 (W)
Suction:	229 mbar
Air flow:	64 L/s

Wet, dry vacuum

Code:	iPulse L-1635
Class:	L
Capacity:	35L
Power:	1,600 (W)
Suction:	229 mbar
Air flow:	64 L/s



Powered vacuum cleaner (wet/dry)

Code:	uClean ARDL - 1435 EHP
Class:	L
Capacity:	35L
Power:	1,400 (W)
Suction:	259 mbar
Air flow:	69 L/s
Weight:	11.1kg



Powered vacuum cleaner (wet/dry)

Code:	uClean ARDL - 1432 EHP
Class:	L
Capacity:	32L
Power:	1,400 (W)
Suction:	259 mbar
Air flow:	69 L/s
Weight:	9.6kg



Portable Battery wet/dry Vacuum cleaner

Code:	SMART:18V
Class:	L
Capacity:	6L
Voltage:	2x18V
Suction:	130 mbar
Air flow:	37 L/s
Weight:	4.2kg

Choose wisely

All our products have been carefully sourced to offer the best, most reliable performance at the best price...

Our TOOLINE promise is to provide a great choice for our customers and to back our products up with a genuine commitment.

We're looking to provide tools you can trust to get the job done and give you carefree operation.

Tooline Limited
49A Sonter Road, Christchurch
Telephone: (03) 365 5931
Email: sales@tooline.co.nz

VISIT tooline.co.nz

✓ Good Value

✓ Great Prices

✓ Fantastic Range

✓ Proven Performance

✓ After-sales Support

✓ Dependable

✓ Popular Brands

✓ Choice of Models

✓ Buy well

See our special guides to
**GENERATORS
& INVERTERS**
and
**AIRLESS
SPRAYERS**



Available from: